



Wollaton Park Golf Club

Newsletter - Spring 2009



MONEY MATTERS FROM REG CARTER

Unprecedented times call for unprecedented actions and I hope the members are happy with the decision to maintain subscriptions at existing levels for this year only. We still don't know what the full impact of the recession will be but we do have the reserves to ride out this financial storm for one year. I hope this is evidence that the Committee does try to put the needs of members at the forefront of all its decisions.

Reg Carter
Honorary Treasurer

INSIDE THIS ISSUE

Captain's Corner	2
Congu handicaps	2
House and Social	2
Greens, Match & Handicap	3
Annual Subscription	3
Ladies Captain's Report	3
Competitions and Matches	4
Ladies Section	4
Junior Section	4
Social Events	4

INSURANCE COVER FOR MEMBERS

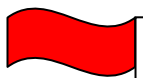
As from 1st April 2009, all playing members will automatically be covered within their subscription by Golfguard, which provides cover whilst playing golf at any club in the UK and up to 120 days abroad –

- Personal liability for injury involving golf buggies
- Third party legal liability
- Personal accident
- Subscription reimbursement due to long term illness
- Hole in one bar bill reimbursement

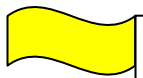
Visiting players will also be covered whilst playing on our course.

Playing members will be issued with a "mini schedule" which they should keep with them when playing golf, particularly at other courses.

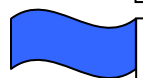
Coloured Flags for Pin Positions From Saturday 14th March



Front third of green – red flag



Centre third of green – yellow flag



Rear third of green – blue flag

Captains' 9 Hole Competitions

Open to Gentlemen, Ladies and Juniors

The Captain and Ladies' Captain will be holding 9 hole singles stableford roll up competitions, starting in May – free entry and a small prize will be given to the winning gentleman, lady, and junior on the evening.

Just turn up between 5 and 7 pm on the following dates

Tuesday 12 May
Tuesday 16 June
Tuesday 25 August

Tuesday 26 May
Tuesday 21 July
Tuesday 1 September

Over the course of the six competitions, the player with the best four cards will be the overall winner and will be presented with a prize at the Autumn prizegiving evening.

Visit the Club's website at www.wollatonparkgolfclub.com now!

CAPTAIN'S CORNER FROM ROBIN BOW

My year as Captain did not quite start as planned. The traditional Drive In competition had to be cancelled due to the greens being water logged. However, I am pleased to report that my drive was straight, up in the air and down the middle of the fairway.

The Incoming Captains' Evening, the Men's Christmas Dinner and the Prize Draw Evening were enjoyed by all who attended, but then maybe for the first time ever the New Year's Eve Ball was cancelled due to lack of support.

2009 again did not start very well with the course being closed for nearly two weeks and with a prolonged spell of very cold weather, the February Stableford Competition had to be postponed. With the golf season fast approaching we can only hope for better weather. With many competitions and matches arranged, please support these and in particular the club matches.

I cannot emphasize how lucky we are to have John Lower as our Professional and I am looking forward to partnering him in the Club matches.

I feel we have an excellent committee this year with much expertise and therefore I can see the club go from strength to strength.

Finally, I would like to wish you all a very successful golfing year.

Robin Bow, Club Captain

CONGU: INACTIVE/ACTIVE HANDICAPS

As from 1st January 2010, the Congu handicapping system will identify active / inactive handicaps, and the following requirements will apply:

- Players will be required to have submitted 3 qualifying scores during the calendar year 2009 to avoid having an inactive handicap for the playing season 2010. NR's will not be accepted as a qualifying score.
- All players whose handicap has become inactive will be required to return three qualifying scores before the inactive indicator is removed from their handicap record. Scores cannot be carried over from one calendar year to the next.
- An inactive handicap can still be used for social golf and in competitions for which an active handicap is not an entry condition. Scores from players with inactive handicaps will be included for the calculation of the CSS.
- This Congu ruling does not affect the Wollaton Park ruling whereby players must have submitted a minimum of three cards in Wollaton Park singles qualifying competitions in the previous 12 month period in order to enter any of the Club's cup, trophy or prize table competitions .

Members who are unable to meet the Congu or club requirements due to injury/illness or who have newly joined the club should refer to the Club Secretary for guidance on these rulings.

HOUSE AND SOCIAL FROM BRIAN ROSS

- The clubs flat roof problems have been identified and resolved by re-felting areas. Water drainage from this area has been improved by extending the soak away from outside the men's entrance.
- Ladies have a new exterior entrance to their locker rooms which will allow improvements to the clubs main entrance to take place.
- Bar refurbishment on a minor scale will be undertaken very shortly as will improvements to the men's visitor changing room.
- New Year's Eve social had to be cancelled through lack of support.
- Valentines Nite was well attended, a good 'Nite' seemed to be had by all and was accompanied by an excellent six course meal.
- A big event coming on the 14th March – our Irish Night. Let's make it a great success – I look forward to seeing you there.

Brian Ross, Vice Captain

COURSE IT MATTERS FROM PETER DION

The Winter work which was commenced early this season has proceeded well and is now practically complete. As an extension to the Winter Work the Green Staff have prepared and re-laid the access to the trolley sheds and have also carried out drainage work for the surface water drainage from the roof of the clubhouse in a cost saving exercise.

Discussions in accordance with the Club policy for the purchase of a new Tees mower for the Spring have taken place. Other course equipment has been fully serviced.

Urgent repairs are being carried out to the top dressing shed where the gable wall is bowing badly. In-house renovations carried out by Tony have greatly improved the course workshop.

Minor alterations to the plumbing within the on-course toilets are being carried out so that the water supply to the taps in the Ladies and Gents toilets will be from the main and will therefore provide drinking water.

Discussions with regard to possible alterations to the 6th green have taken place and Members' suggestions on this point would be welcomed.

The course was closed for over a week early in February due to inclement weather.

It is hoped that Winter work for 2009/2010 will again start early in the Autumn but this will be dependent on a decision being made with regard to the provision of a mini excavator which is essential for this type of work.

Peter Dion, Chairman GMH

ANNUAL SUBSCRIPTION 2009-10

Members are reminded that annual subscriptions become due on 1st April and must be paid by 1st May. Any member wishing to change their category of membership must apply to the Secretary prior to 31st March.

Subscriptions may be paid by the following methods:

- Cash or cheque (made payable to WPGC)
- Direct Debit – 10 monthly payments (service charge of 5.85%)
- Debit Card (plus £1 handling fee)
- Credit Card (plus 2.5% ccc)
- Internet Banking – please contact the Club Secretary for details

Members who made use of the direct debit facility for 2008/9 will automatically be renewed on this scheme for 2009/10, unless you advise the Club Secretary otherwise. Members who wish to start using the direct debit facility for 2009/10 should complete the enclosed form and return it to the Club Secretary as soon as possible.

Club diaries (and membership year stickers for playing members) will be issued on receipt of subscription payment.

LADY CAPTAIN'S REPORT FROM ROSEMARY BOW

I am now almost one third of the way into my captain's year and the new golfing season is about to begin.

The Ladies' Christmas lunch was very well supported and the Prize Draw was a lovely evening ending with the Salvation Army playing carols for us. A great start to Christmas.

Unfortunately come January things started to go downhill a little with three competitions being cancelled and the Invitation Bridge being postponed, all due to bad weather. Hopefully it can only get better!!

We have a full fixtures list with plenty of Wednesday Competitions, Leagues and friendly matches and mixed competitions, please watch the notice boards and put your name down.

Finally, may I wish you all a great 2009 with good golf and above all good health.

Rosemary Bow, Ladies' Captain

COMPETITIONS AND MATCHES

Signing up on competition start sheets

A member may enter on the start sheet the names of players for one match time only.

The member entering names must put his own name first and he will be responsible for all names entered by him for that match.

Any members contravening this ruling must be reported immediately to the Secretary.

LADIES SECTION

New Entrance to Ladies' Locker Room

The new entrance to the ladies' locker room is now in operation. It is fitted with a security code keypad, but the door will be locked and secured overnight

This will hopefully make access a lot easier for the ladies, rather than having to negotiate three sets of doors, armed with clubs, trolleys, etc.

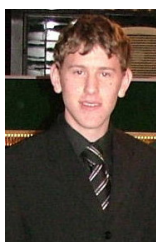
JUNIORS SECTION

Junior Evening – Thursday 19th March

All junior members will have received an invitation to the Junior Evening on Thursday 19th March. If you have not yet replied, please do so as soon as possible.

2008 was a good year for our juniors, with lots of enthusiasm, new members, and some great golf. We are looking forward to an even better 2009, so we hope to see as many of you as possible on 19th March for our annual junior section get-together.

Junior Captain for 2009/10
Elliott Limb



Your Club Needs You!

This year Phil Pallant (1st Team/Combined Team), John Smith (2nd Team/Combined Team) and Paul Maguire (Seniors Team) will be working together, on behalf of the Committee, to help run the Club's four teams. After the difficulties in producing some teams last year, we are appealing to all members of the Club to consider having a go and playing for Wollaton Park during 2009.

As you will have seen from the comprehensive fixture lists available in the Clubhouse, there are a great many opportunities to represent the Club at all levels, not only on our own course but also on some other excellent local courses. These fixtures provide a real opportunity to enjoy competitive match-play golf in an atmosphere of friendly rivalry while also cementing friendships within our own Club. Once the matches have been completed we ask all team members to stay for the post-match meal but we do consider the cost, between £8.50 (Seniors) and £10 per game, excellent value either home or away.

The only restrictions for selection are by handicap allowance in the 1st and 2nd Teams and over 60's in the Seniors Team but it is important to realize that these teams provide an opportunity to ALL members and not just a privileged few. Details of the team specifications can be found on the designated changing room notice boards and, when the time comes, team sheets will appear in these same areas.

Finally, if you haven't seen the fixture lists as yet, do please look at them - or better still take a copy away with you - check in your diary and, if you are available, then sign up and share the experience of representing Wollaton Park during 2009 – if you haven't tried team representation before we think you will find it an enjoyable experience.



Remember -

Your Club Needs You!

UPCOMING SOCIAL EVENTS - Organised by your Committee for YOU!

Saturday 14 March
Thursday 19 March
Saturday 28 March
Saturday 25 April
Thursday 21 May

Saturday 30 May
Saturday 18 July

Irish Night with Discorama
Junior Evening
Quiz Night (last of the season)
St George's Night Celebration with Craig Baumber
Social Evening and Prizegiving –
Mansfield Am Am and Spring Meeting
Summer Ball with The Jimmy Willan Connection
Summer BBQ with Discorama



LOOK OUT FOR POSTERS AND SIGN UP ON THE LISTS IN THE LOUNGE