



Wollaton Park Golf Club

Newsletter - Summer 2008



“T H E R E I S O N L Y O N E P L A C E T O S T A R T — T H E C O U R S E ”

INSIDE THIS ISSUE

House & Socials from Tim Bowler	2
Greens, Match & Handicaps from Peter Dion	2
Money Matters from Reg Carter	3
Junior Section from Avril Jamieson	3
Ladies Update from Jeanna Parton	3
Congu Two Step from Steve Parton &	4

Defibrillator

Thanks to the fundraising efforts of last year's Captain, Tim Bowler, the Club now has a defibrillator, housed in a cabinet in the Lounge near the Bar door.

Our staff first aiders – John Riley, Roger Buchanan, Martin Scothern, Ben Cumberland, Tony Barker and Annie Tidswell - are familiar with the procedures, but in an emergency situation, the defibrillator is very easy to use, with step-by-step voice instructions.

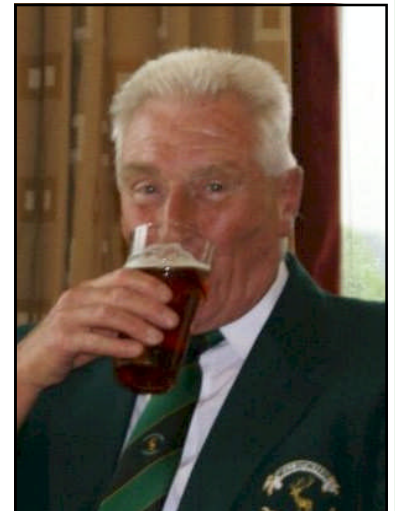
Whilst we are very happy to have this facility, we would, of course, be even happier if we never have to use it !!



“I'll shoot my age even if I have to live to be 105”

Bob Hope

There is only one place to start, the course, its lay-out and condition are absolutely first class. My congratulations to Peter Dion, Chairman of Greens, to his committee and to Roger Buchanan and his staff for all the co-ordinated hard work that has taken place. We have set a standard for all to see, we have received many accolades regarding the course from members, visitors and the Nottingham Union of Golf Clubs. The challenge now of course is to maintain and even improve. Well done to everyone. In the Spring issue, I wrote of the “entire playing season still to come,” I can assure you it is well underway. Whilst both the 1st and 2nd team events have been most enjoyable and, in the main, coupled with good results, we still find it difficult at times to raise the number of players required. I can assure you they are superb social occasions with good value, good humour and good sportsmanship. You should really try them. Many of you have enjoyed the courtesy of other courses whilst we have hosted the County events, this has been well organized by the “office” and I know appreciated by you all. My Captain's Outing in May to The Leicestershire course was, despite all the rain, successful and enjoyed by all those taking part on the day.



The Captain in a fairly typical pose on his Captain's Outing on Wednesday, May 28th at The Leicestershire Golf Club

It would be impossible to mention every event but it was a delight to see Simon Kisiel's face when he was presented with the Club Championship. His pride, delight, and amazement was there for all to see. It's nice to have a new name on the board and many congratulations to Simon. I have to sincerely thank so many of you who took part in my Captain's Day, it appeared most successful and the icing on the cake was that almost £1,000 was raised for charity, a truly tremendous result. John Lower and I have re-introduced the Professional/Captain's Challenge, the gauntlet has been taken up by a number of you. Having lost the first match, John and I saw how happy the members were to have won. I can report, so far, we have lost every challenge, what a happy club it is! We are not so charitable in our 1st team matches, I can assure you, quite the reverse! Committee work, of course, has continued, as has the administration of the Club. A good deal of hard work goes on behind the scenes and I thank all members of the committee and indeed, many members of the Club, who get involved with numerous aspects. There is likely to be a number of significant changes on the committee later this year and new, and dare I say, young blood is required. If you feel you may be interested in joining the committee, the Secretary, myself and any member of the committee would be only too pleased to advise you accordingly.

Finally, whilst very easy to say, I can assure you that it is a great pleasure and honour to be Captain of this club. Where has all the time gone? May I wish you good golf, good company, good health and offer my sincere thanks to you all.

Visit the Club's website at www.wollatonparkgolfclub.com

HOUSE & SOCIALS FROM TIM BOWLER

We are all very pleased to welcome our Club Steward back to work following his quadruple heart bypass last year followed by a hip replacement earlier this year. An added benefit is that he is now one inch taller if he stands on his left leg, so if anyone can supply trousers with right leg 27" and left leg 28", please let John know!

The committee is constantly looking at ways to improve the facilities available to members and visitors with the relatively limited resources available. One of the areas we have been concerned about for some time is the distinct shortage of space in the visitors' changing facilities area. We shall shortly be undertaking some minor and inexpensive changes to the Visitors' Changing Room and access to the Men's Locker Rooms with a view to extending the visitors' area which will also increase the security to the members' area at the same time. Essentially this will result in access to the Men's Locker Room only being gained from the door in the passage way next to the weighing scales and the re-siting of competition results and handicaps notice boards in the main locker room areas. Access to and from the Bar will remain unchanged.

From time to time we have to carry out fire alarm tests and fire drills. If you happen to be in the Clubhouse when the fire alarm sounds, you should leave the premises immediately and assemble on the grassed area under the flagpole at the front of the Clubhouse. You should not return until authorised to do so by John Riley, the Club Steward, who is a trained Fire Marshal. Just as a gentle reminder - please remember that all guests to the Clubhouse must be signed in by a member to a maximum of five guests per member – in the visitors' book in the entrance hall. This includes all members' guests attending social functions and Sunday lunches.

The Committee has recently introduced "feedback" cards to make it easier for members, and indeed visitors, to register any comments they may have, both positive and negative, about any aspect of the Club. These cards are readily available around the Clubhouse in their clear plastic holders.

On the socials front the last two events have been excellent affairs. The Spring Ball on Saturday 31st May had the best atmosphere in the Clubhouse for many years with The Jimmy Willan Connection performing "live on stage". On a chilly evening on Saturday 12th July, the Hog Roast and Luxury Barbeque, which could have been better attended, turned out to be a great feast of brilliant BBQ food provided by Whitwells of Canning Circus. The socials planned for the rest of the year are listed on the back page - there is something for everyone here so please try and support them. You might actually enjoy yourself!

GREEN, MATCH & HANDICAP FROM PETER DION

We are pleased to welcome Ben Cumberland to the ground staff which now means that we are back to a full complement. Continuing the present policy of your Committee to upgrade the equipment for the course, the trailer which has served us well for over sixty years has now had to be retired and replaced. It is further anticipated that a new tees mower will be purchased for next year. Unfortunately our water storage capacity for the sprinklers is very restricted and with only a small bore pipe feeding the tanks the recovery rate is very slow. We have over the past year or so been fortunate with the weather, however should we have a long dry spell the course would adversely suffer so investigations are taking place to see if it is possible to increase our present capacity or supply.

We are also extremely short of storage capacity for top dressing for the greens and tees which, at present, is stored in the large shed along with various items of equipment so the Nottingham City Council Planning Department have been consulted with a view to extending the length of the shed to provide a dedicated top dressing store. I'm pleased to report that these negotiations are proceeding well.

The path between the 9th green and the putting green has for many years been a cause of concern, water running off adversely affects the bunkers to the green whilst the surface of the path is both unsightly and uneven. It would be possible to approach the 10th tee and also leave the 18th green around the top side of the clubhouse in which case the path would be removed and grassed over providing a far better appearance from the clubhouse. The shoe cleaner could possibly then be repositioned adjacent to where the club buggy is parked. Members' opinions would be welcomed on this proposal. Derek Allwright is still experiencing difficulties with regard to obtaining players for matches and he would appreciate offers to play from any interested members.

As we recently have had an influx of new members in all categories, most of whom are new to golf and therefore require an official handicap, the handicap sub-committee use the CONGU guide lines to allocate a handicap. The guidelines state that three cards should be submitted duly signed by a member (preferably by their proposer/seconded). For men, including juniors and cadets, the bench mark is three cards of 105 or less to be allotted a 28 handicap. For ladies and girls it is three cards where one is 120 or less to be allotted a 36 handicap. It is advisable to submit the three cards together rather than individually. We would also like to point out that whilst achieving a handicap is important, of greater importance is learning the etiquette of the game. At some golf clubs it is now a requirement that new members without a handicap have to be assessed by the club professional, both for etiquette and golf ability, before being permitted to play on the main course. Is it something we should consider?

MONEY MATTERS FROM REG CARTER

There is really not a lot to report on the financial front at present. The last financial year to 31st March 2008 ended with the Club's finances in a relatively healthy state. At the moment our male membership is full and we appear to be well placed for the future. The only possible little problem on the horizon is that we face a rent review this autumn with the City Council and so the Committee is currently preparing arguments and gathering evidence from other clubs to mount a challenge should there be any proposed attempt to increase our rent.

JUNIOR SECTION FROM AVRIL JAMIESON

What a difference a year makes! In 2007 our major junior competitions were all cancelled due to lack of support. This year we had a record turnout for the Ross Trophy of 51 players, including 31 from Wollaton Park, almost half of our junior membership. Congratulations to all who battled through the rain and wind to complete the match, especially the 18 juniors who do not yet have handicaps. The overall winner with 40 points was Elliott Limb, runner up James Hollis on 38, the non-handicap winner was Tabitha Romer on 46, with runner-up Alex Butler on 39, the Cadet winner was Alistair Hart on 27, with runner-up Alasdair Tilson. Sincere thanks to David and Brian Ross for their generous sponsorship.

Our NUGC junior league team have started the season well, a draw with Coxmoor and a win against Beeston Fields, under the able captaincy of Josh Slade. The team have just been kitted out with new polo shirts and baseball caps, thanks to the generous donation from Sunday Scrubbers' Ball Draw.

The matchplay leagues for the MJS Rush Cup and Secretary's Salver are posted in the Lounge, again with a good number of entrants – all matches are to be played by 30th September.

Entries are still open for the Henderson & Carlisle Trophies on Sunday 7 September (under 21's) and the Junior Masters on Sunday 21 September (under 18's and non-handicappers). Let's see another record entry for these events this year!

LADIES' SECTION UPDATE FROM JEANNA PARTON

We are now well into the playing season and although the weather has been mixed we have all been privileged to have been able to play on what must be one of the best presented courses in the County.

My Captain's Day was very well supported and I was joined on the day by my husband, children and grandchildren. It was a very happy and enjoyable time and I will treasure the memories of it always.

We continue to interview new Lady Members and the signs are that at last we are beginning to see an increase in our numbers. Hopefully a good pointer for the future.

Our congratulations must go to one of our juniors - Harriet Owers-Bradley, who recently competed in the Midland Ladies Championships at Rothley where she won the 36 hole competition with scores of 69 and 73. What an achievement - well done Harriet.

Finally I would like to wish everyone good golf for the rest of the season and hopefully some sunshine too.

WHERE'S THE HOLE? FROM STEVE PARTON

Tournament players always know where each flagstick has been positioned on every green before they stand on the tee - their caddies go out and either collect a pre-printed handout from the tournament organisers or they physically measure them. The pin position will obviously affect the way they play the hole as they set up to get an easy approach shot. At Wollaton we don't do daily handouts or employ professional caddies which makes our golfing life a little harder because there are a quite a few holes on the course where we cannot see the pin position from the tee. Some of us don't have 20/20 eyesight in any event! And most of us don't have the memory to check the pin positions on the holes we can see before we get to them - like the pin on the 7th green which is very clearly visible from the 2nd tee! For some years we have used the "plastic ball on the flagstick" method to assist members in knowing how far onto the greens the pins are placed. However there have been a number of mutterings of dissatisfaction of late especially when we have been cursed with light conditions that make the plastic balls tricky to see, even from the tees on short holes (and especially the 8th!). We could go in for a number of alternative solutions a) the costly and time consuming one of printing out information sheets daily b) the use of different coloured flags on the pins instead of the plastic balls (i.e. green for short, yellow for mid, red for long) c) or a pin position marker on each tee! Have we really got a problem? - let us know your views please!

Doing the CONGU Stroke Index Two Step! by Steve Parton

Part of the work of the Greens, Match and Handicap Committee is keeping the Club up to speed with the latest developments and strictures emanating from our governing body CONGU (Confederation Of National Golf Unions). Some members may have wondered at strange stroke indexing when visiting other courses - such as Sherwood - where arguably one of the easier par 5's in the county is officially rated as Stroke Index 1. Also rather simple par 3's have single figure stroke indexes as well. Is CONGU at work? Stroke Indexes are no longer to be a measure of the relative difficulty of holes under medal play - they are now interpreted rather as an ordered list (with extra conditions) of where a lower handicap player would most like to give a higher handicap player shots in Matchplay. Just for fun (and because I had an odd six hours spare) I think I have worked out our CONGU Recommended Stroke Index as follows: H1=S9, H2=S13, H3=S5, H4=S1, H5=S3, H6=S7, H7=S17, H8=S15, H9=S11, H10=S12, H11=S6, H12=S14, H13=S4, H14=S16, H15=S2, H16=S18, H17=S8, H18=S10

There are a number of background logics -

- i) Because matches start and finish at Holes 1, 9, 10 and 18 no players of similar handicaps should be giving strokes at those critical holes, especially if going into a sudden death playoff!
- ii) The longer 9 holes has to have all the odd stroke indexes and the shorter 9 all the even ones!
- iii) Par 5's have low indexes! (unless they happen to be Holes 1, 9, 10 or 18)
- iv) Stroke Indexes are wholly irrelevant to medal play and are assumed to equalise statistically under Stableford points scoring conditions in any event!

CONGU is expecting us to implement this fairly soon - in much the same way that we have implemented full handicap differences in most Match Play Competitions. Member's views please - to myself in the first instance - before we put this or something very closely similar into effect on the next printing of our scorecards in a year or so's time! Now I could well be wrong in the way I have done this but please remember that sometime in the dim and distant past I did get an A level in Pure and Applied Maths (Statistics) - it was not a very good A Level - but I suspect it was one more statistical qualification than the entire CONGU organisation possesses!

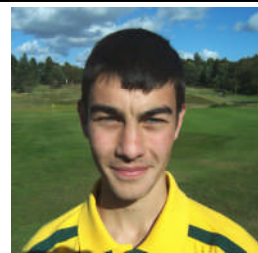


Simon Kiesel - Our New Club Champion

The Club Championship took place on Sunday 15th June, with over 30 Division 1 members participating. Congratulations must go to Simon Kiesel, this year's Club Champion, who turned in a 36-hole scratch score of 146, in second place was Gary Shepherd with 149 and in third place was Perry Evans with 151. Simon is seen here (left) receiving the trophy from the Captain.

Junior Boys Do Well at Sherwood Forest

In the Lamplugh Trophy on Sunday 20 July at Sherwood Forest, the Wollaton Park team came 4th out of 21 county teams. The team, captained by Josh Slade (pictured right), also included Seb Thompson, Elliott Limb and Josh Morris, who had the best individual score of 47 points. The team wore their new kit for the first time, and Brian Saunders, the County starter, said that if there was a prize for the best turned out team, then it would definitely have gone to the Wollaton Park team - well done, boys!



WE WOULD LIKE TO EXTEND A VERY WARM WELCOME TO ALL THOSE MEMBERS JOINING THE CLUB RECENTLY

They are: **Ladies** - Susan Ambler, Jennifer Dugdale, Ann Thomson. **Men** - Sukhdev Attwall, Ian Briden, Ian Clarke, Simon Clarke, Gary Clay, Nick Collard, David Cottingham, Richard Davis, Nick Dawe, Paul Dawson, Simon Dawson, Peter Diggie, James Dunbar, David Ellis, John Forrester, Guy Gisborne, John Griffiths, Ken Grundy, Simon Hawksworth, David Hughes, Gary Hutchinson, Paul Martin, Craig Mather, Carl Powell, Keith Powell, Tom Savidge, Karl Stevens, David Teasdale, Ian Tilson, Kostas Tsintzas, Patrick Voce, Carlos Wallace, Stuart Wilson. **Junior Boys** - Benjamin Biddulph, Christian Darnell, Max Griffiths, James Harrison, Dan Midgley, Daniel Robinson, George Ryland, Kartar Soar, Alex Watmore, Ellis Williamson. **Junior Girls** - Leanne Martin. **Social** - Jennifer Moore

UPCOMING SOCIAL EVENTS

Saturday 13th September - Ceilidh with "Five Go Off"
Saturday 11th October - Autumn Dinner & Dance with "The Crew"
Thursday 16th October - Captain's Video Horse Race Night
Saturday 1st November - Incoming Captains with Colin "Fingers" Henry
Saturday 8th November - First Quiz Night of the 2008/9 Series

Full details of the next social can be found on the notice board in the Lounge

Members and visitors are respectfully reminded that the blue spike carpet in the Lounge is only an access route to fetch drinks from the bar or coffee machine to then take them out onto the patio. Drinks may not be consumed at the bar in golf shoes or without shoes at all.



"I have a tip that can take 5 shots off anyone's game - it's called an eraser"

Arnold Palmer